

TECHNICAL DATASHEET: YH140A3

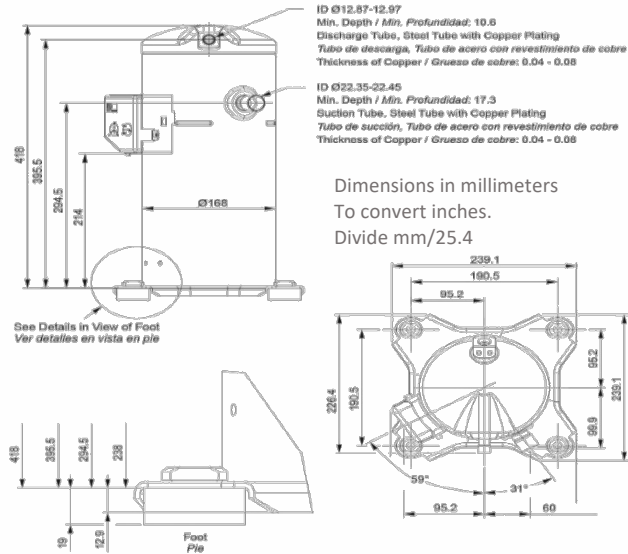
Archivo	Revisión	Elaboro	Hoja
YH140A3_TDS	03/2023	RGE	1

TEST CONDITION AHRI-540-2020 HIGH TEMPERATURE/AIR CONDITINING/CHILLERS						R-22	460V /3PH/50-60Hz	TOLERANCE ± 10%
Units	Te	Tc	SH	SC	Tret.			
Imperial °F	45	130	20	15	65			

NOMINAL TEST CONDITION PARAMETERS	Value	Imperial	Value	International	Comments
Frigorific potency	57717	Btuh	16,926	Watt	
Instant energy consumption	5130	Watt	5130	Watt	
Efficiency BTUh/W (EER) W/W (COP)	11.25	Btuh/W	3.30	W/W	
Nominal current consumption	23.88	A	23.88	A	
Nominal Displacement	0.00	In/Rev	77.5	Cm ² /Rev.	
Total heat rejection	75,210	Btuh	20,983	Watt	

Mechanical data	
Displacement at 3500 RPM	4.76 CFM
Commercial Horsepower	4.6HP
Compressor Weight	33 kg (72.6 Lb.)
POE Oil original charge	1.4 L (49 Oz.)
POE oil refilling charge	1.25 L (44 Oz.)
Center holes mounting	7.5 x 7.5 in
Required food print	9.5 x 9.5 in
Total height	16.5 in
Ø Discharge tube	½"
Ø Suction Tube	7/8"

Electrical data	
Braker protection MOC	10 A.
Locked Rotor Amp. LRA	45 A.
Voltage range	460 VAC
Phases	3
Electric supply frequency	50 - 60 HZ
VFD app range	35 - 65 Hz
Run capacitor	None
Start capacitor	None
Start relay	None
Crankcase heater	70 W



Frigorific potency in Btuh performance at different conditions in °F								
↓Tc Te→	-13	0	10	20	30	40	50	54
77	20730	29063	36747	45695	56009	67894	81452	87360
80	20320	28619	36269	45115	55360	67108	80598	86472
90	19057	27117	34527	43100	53072	64479	77559	83296
100	17793	25580	32717	41016	50613	61678	74348	79915
110		24009	30839	38831	48052	58707	70967	76329
120			28927	36508	45354	55599	67347	72504
130				34118	42553	52286	63556	68474

Instantaneous potency in W performance at different conditions in °F								
↓Tc Te→	-13	0	10	20	30	40	50	54
77	12.13	12.81	13.14	13.37	13.56	13.75	14.01	14.14
80	12.53	13.21	13.55	13.78	13.96	14.15	14.41	14.54
90	13.99	14.66	14.99	15.21	15.39	15.57	15.82	15.95
100	15.69	16.34	16.65	16.86	17.01	17.18	17.41	17.54
110		18.3	18.59	18.77	18.9	19.05	19.25	19.37
120			20.88	21.03	21.13	21.24	21.41	21.51
130				23.69	23.76	23.82	23.96	24.04

Current consumption in Ampere								
-13	0	10	20	30	40	50	54	
17793	25580	32717	41016	50613	61678	74348	79915	
	24009	30839	38831	48052	58707	70967	76329	
		28927	36508	45354	55599	67347	72504	
17793	25580	32717	41016	50613	61678	74348	79915	
	24009	30839	38831	48052	58707	70967	76329	
		28927	36508	45354	55599	67347	72504	
			34118	42553	52286	63556	68474	

Mass flow in Lb/h								
-13	0	10	20	30	40	50	54	
116.75	164.13	205.64	252.49	305.84	366.47	435.6	465.76	
115.95	163.42	204.99	251.92	305.36	366.1	435.34	465.55	
113.37	160.98	202.7	249.8	303.45	364.43	433.94	464.27	
110.81	158.38	200.1	247.24	300.96	362.03	431.67	462.05	
	155.54	197.12	244.16	297.79	358.82	428.44	458.83	
		193.67	240.45	293.87	354.71	424.17	454.51	
			236.06	289.11	349.62	418.79	449.01	